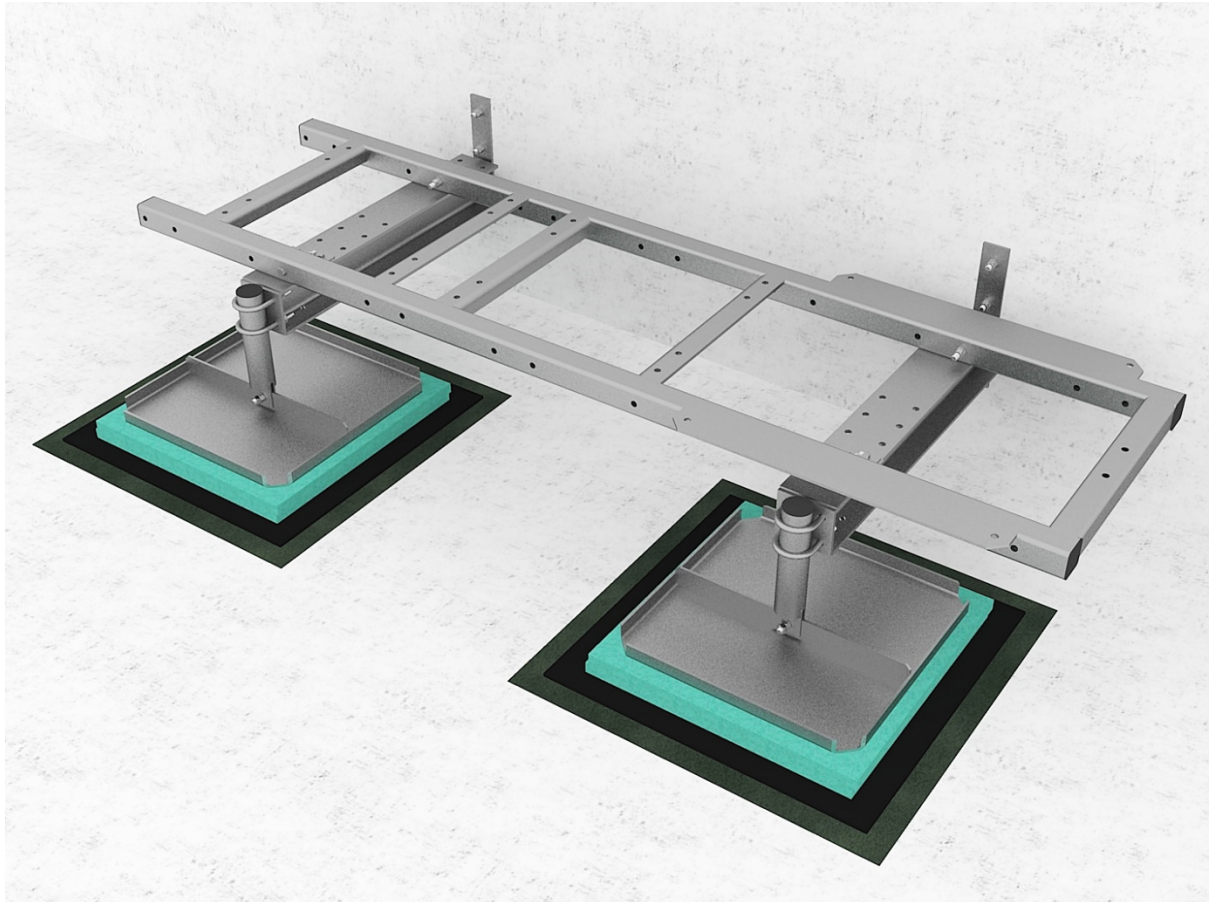


GR 129-10

RAMME PÅ VEGG FOR RU/LR UTSTYR - 2 STK BJELKER 0,8M

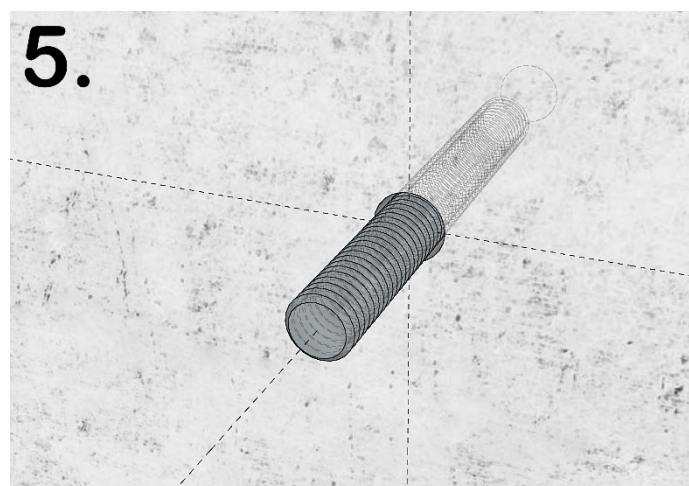
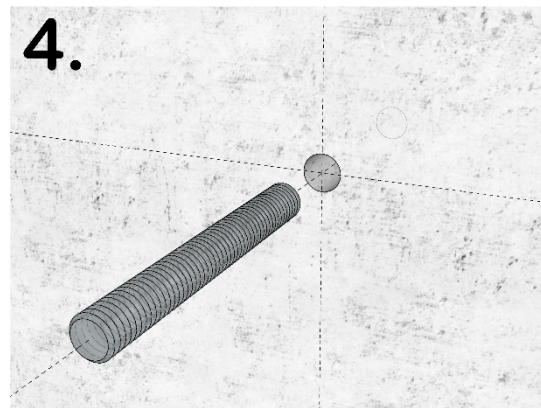
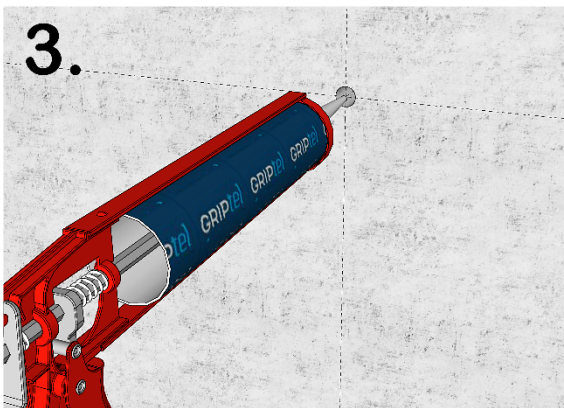
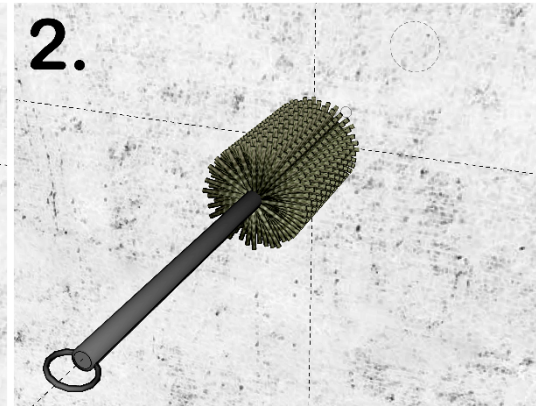
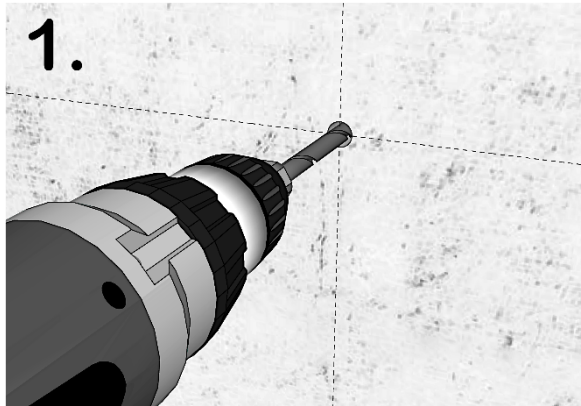
OVERVIEW



1. PREPARING FOR THE INSTALLATION

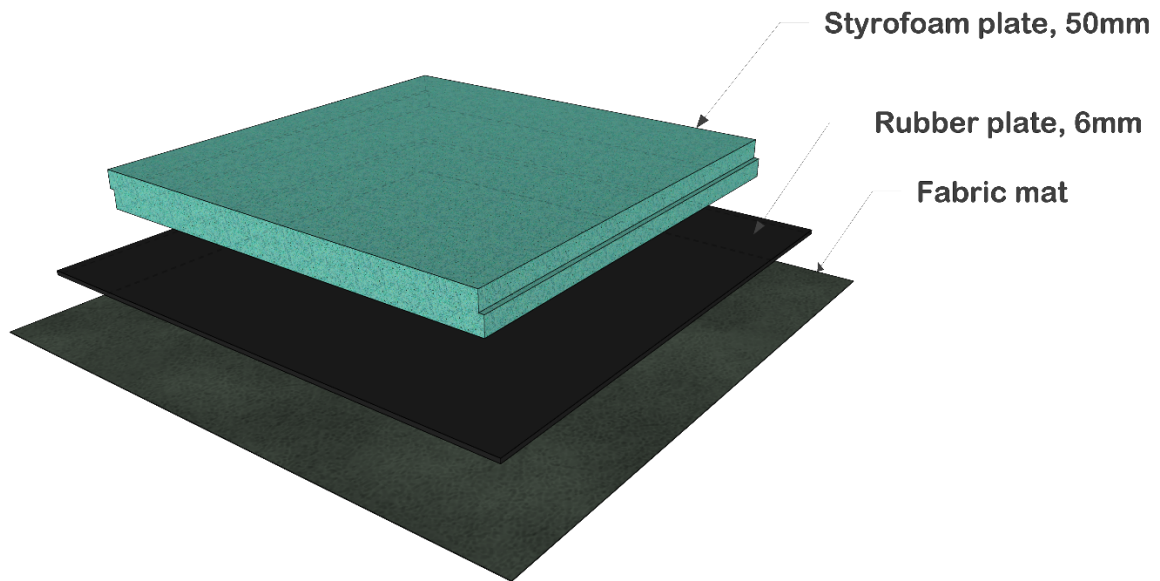


1. Drill hole to specified diameter and depth
2. Blow out the dust and clean dust and debris using brushing
3. Inject adequate MULTICOMPOUND/ Order from our web-shop: "[Pluggmasse/Pluggmasse MSC](#)"
(if the type of the wall requires, use appropriate anchors/ Order from our web-shop: "[SIHYLSTER](#)")
4. Insert threaded rod and cut excess part of the stud



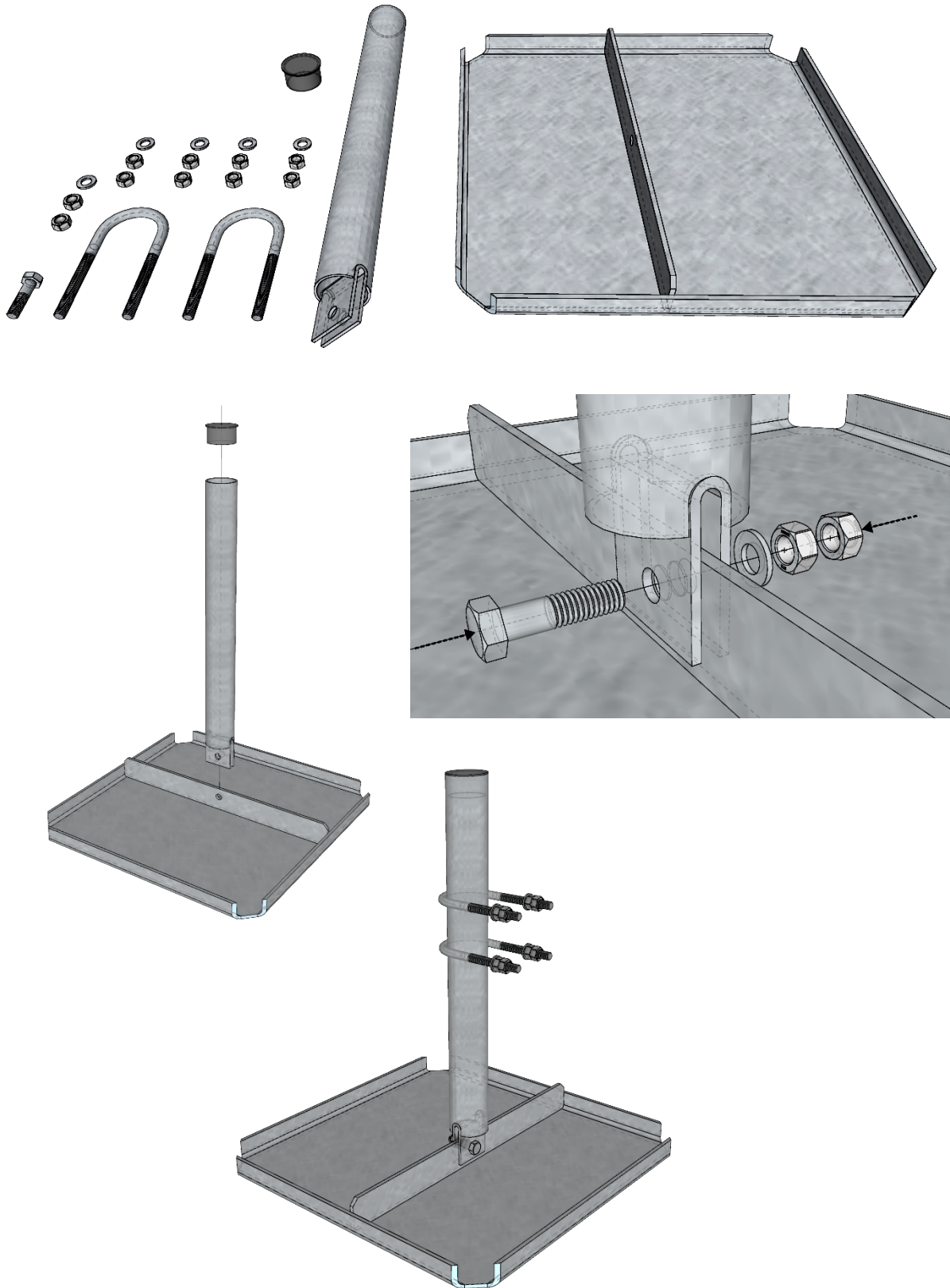
2. PREPARE FLORING

i *Protect the surface from the damaging using Styrofoam plate, rubber surface and fabric mat below each supporting plate*



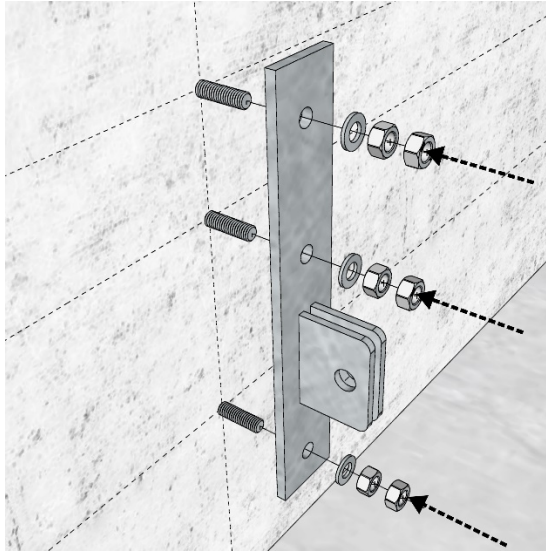
3. Lastfordelende plate m. Ø60 rør - L=600mm; GR120-11-P19

- i** Place the central tube to the vertical position on the base frame;
Cut excess part of the tube after installation;



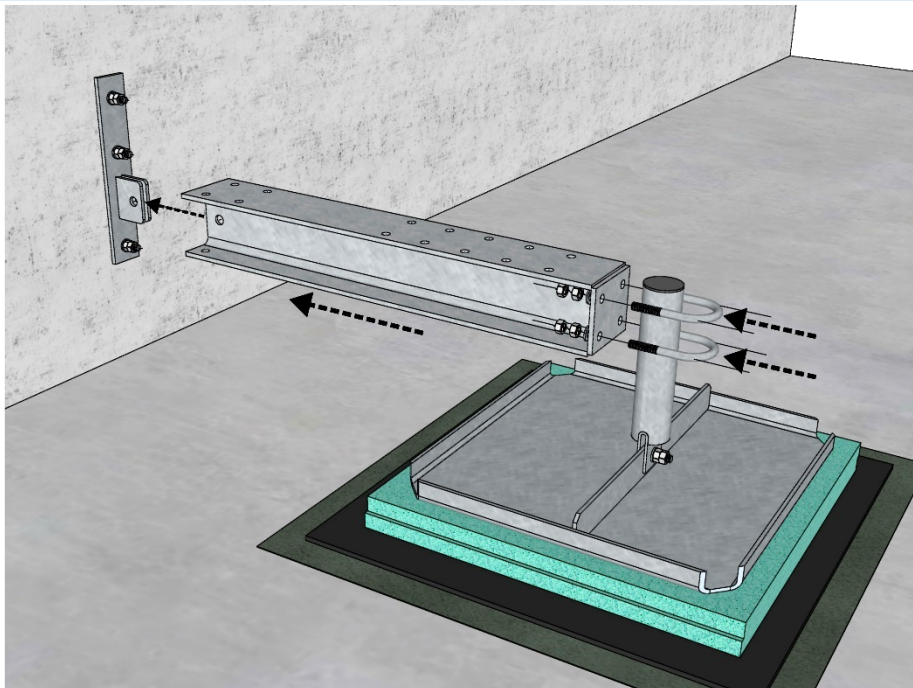
4. SUPPORTING WALL BRACKETS

- i** Install 2x wall brackets **GR120-11-P20** on the prepared chemical anchors on the wall;
(Recommended: Distance between two wall brackets 1400mm for Platform **GR129-11**)



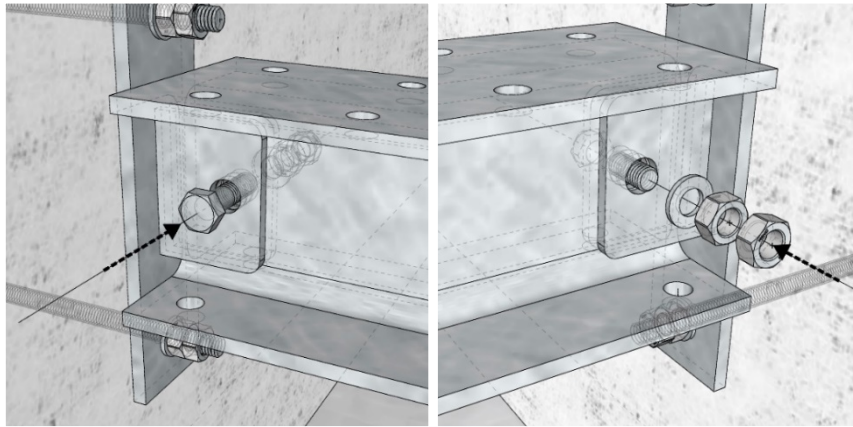
- i** Attach 2x **GR120-10-P01** horizontal beams to the prepared wall supports **GR129-10-P20** on the wall side and attach vertical support pipe **GR120-11-P19** on front end of the beam.

Supporting pipes needs to be cut and level with top of the horizontal supporting beam

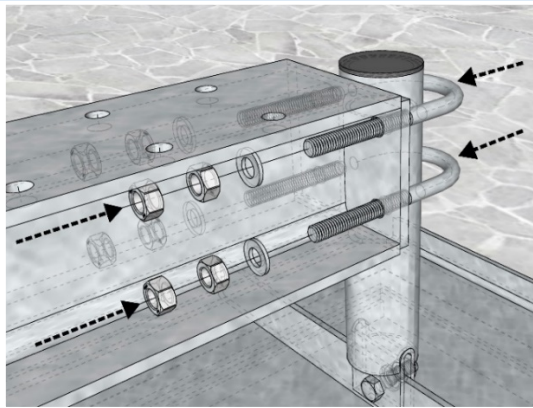


MOUNTING INSTRUCTION

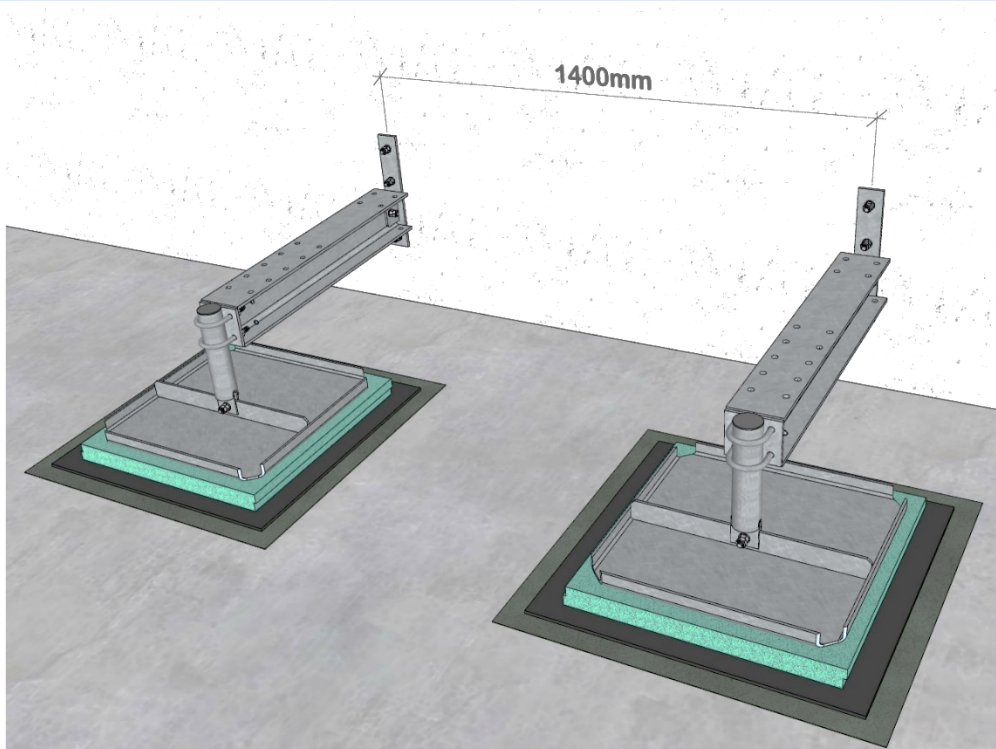
i Connect horizontal beam to the wall support using M12x40 bolt/ Use counter bolt



i Connect horizontal beam to the vertical support pipe using U-bolts from the GR120-11-P19 set

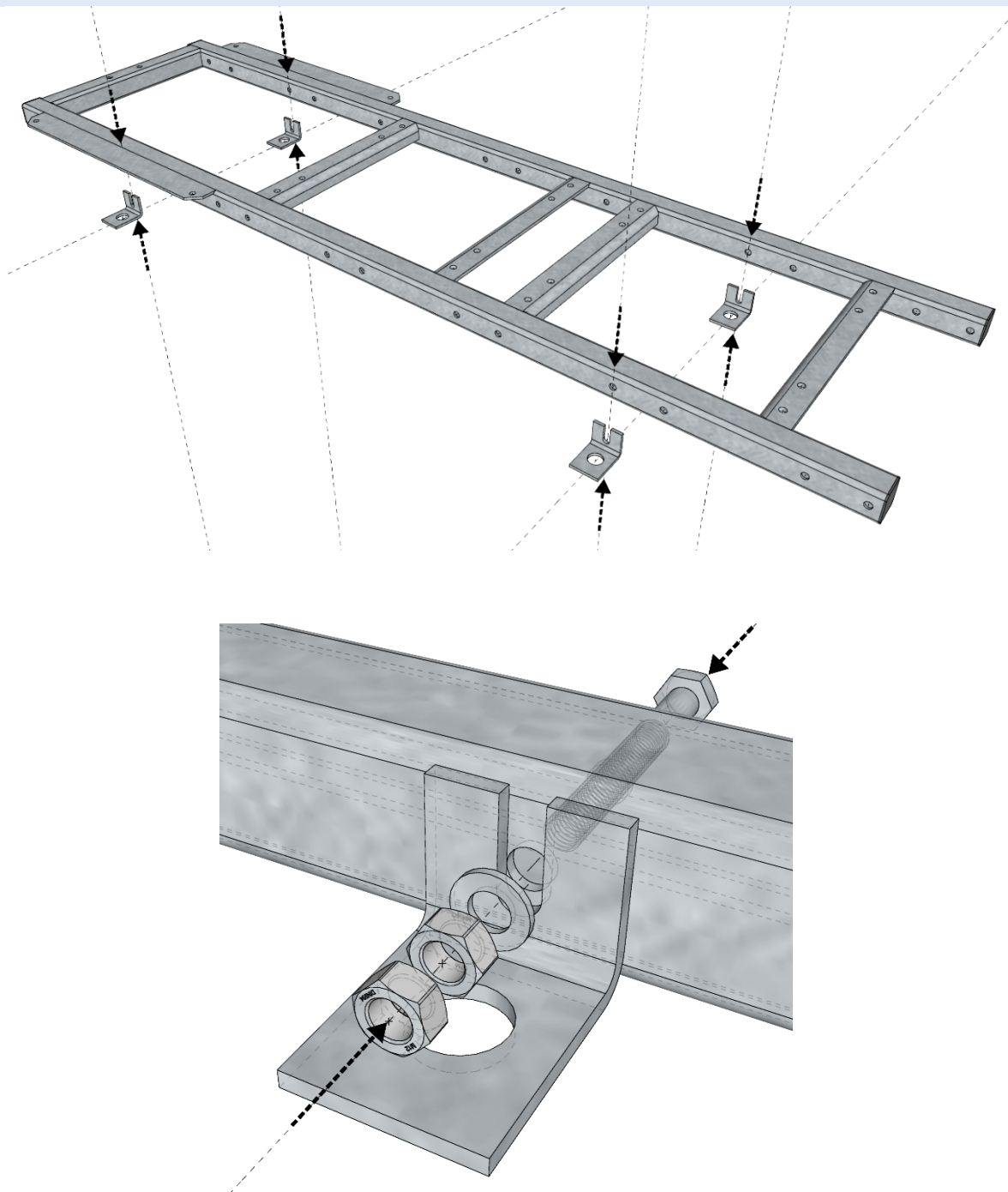


i Recommended: Distance between three wall brackets/main horizontal beams should be 1400mm



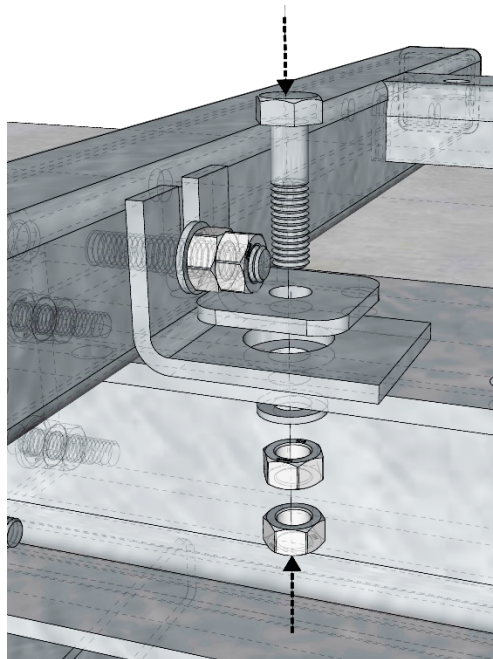
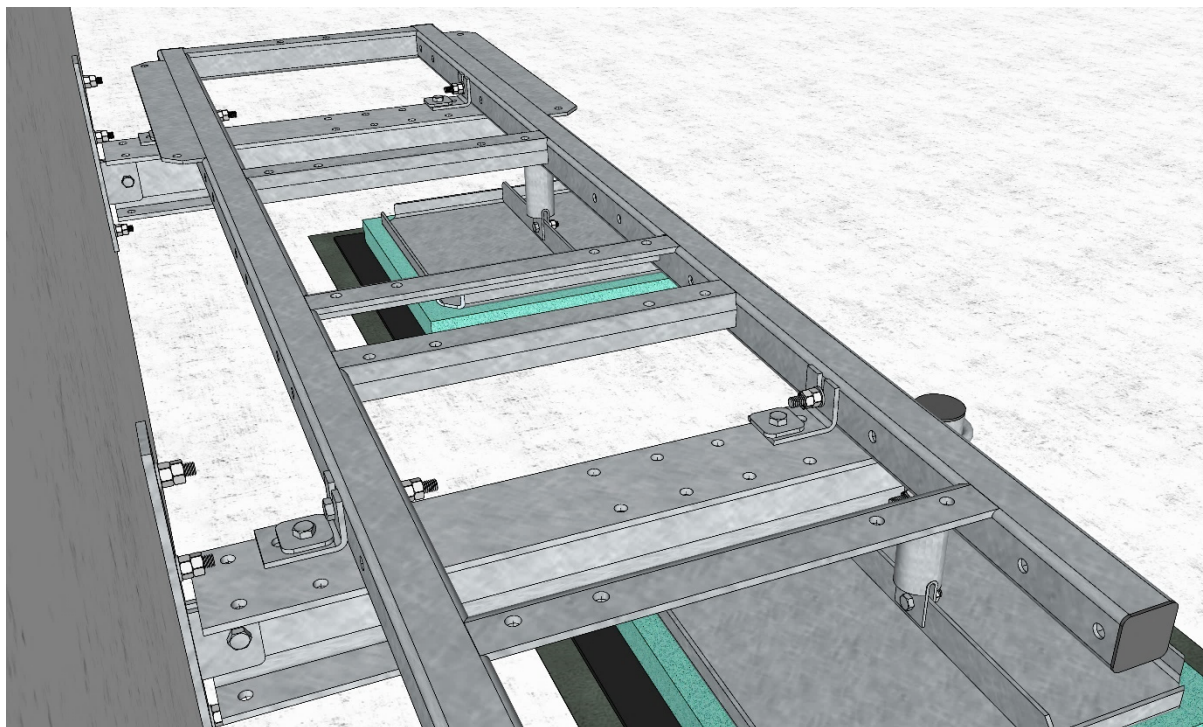
5. EQUIPMENT FRAME

i Prepare frame **GR120-12-P25** by adding 4x fixing brackets **GR120-10-P08** using 4x M12x100 bolts
Distance between fixing brackets should follow distance between horizontal beams – 1400mm



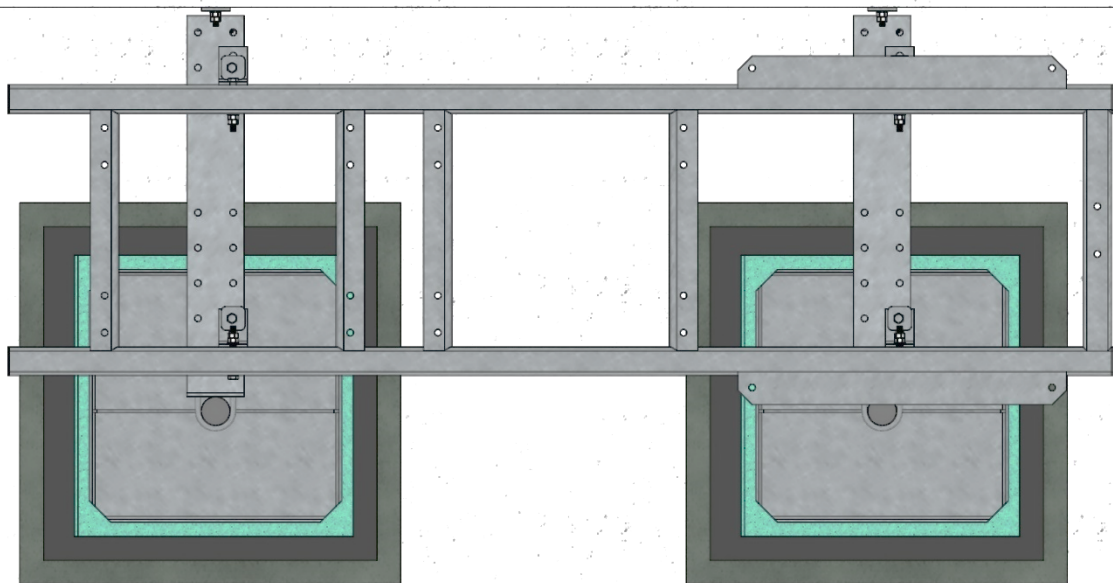
MOUNTING INSTRUCTION

i set the frame for equipment over prepared beams using 4x M12x40 bolts

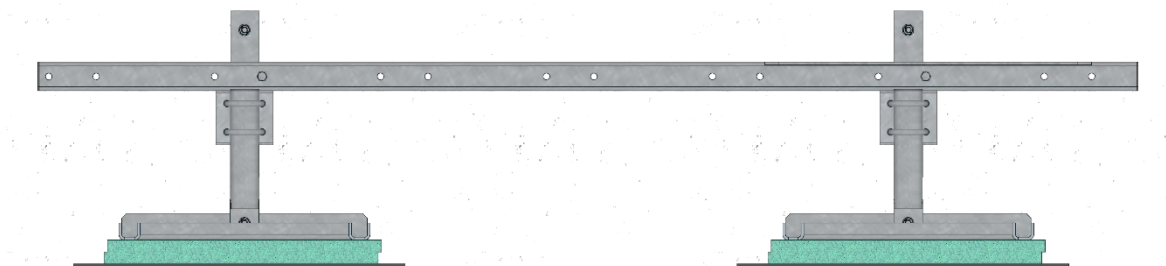


6. LAYOUT DRAWING

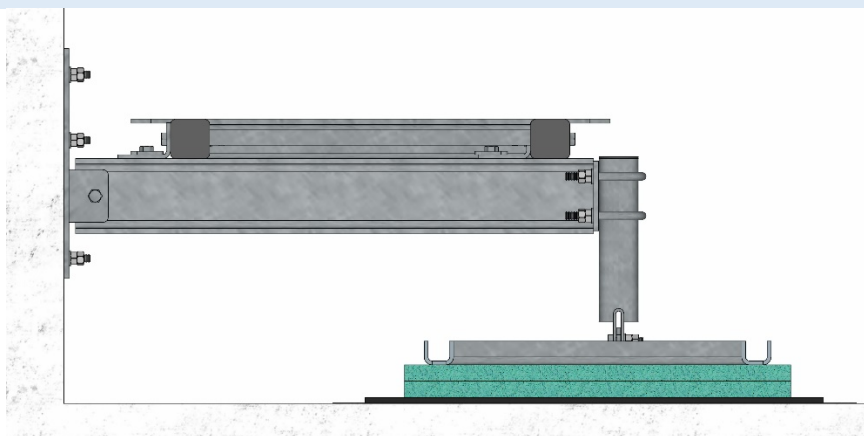
i Top view



i Front view



i Side view



7. RRU SUPPORT - OPTIONAL

i Install RRU-support **GR120-13-P35** on the side of the GR129-10 steel platform using 4x M12x100

Note: order separately

