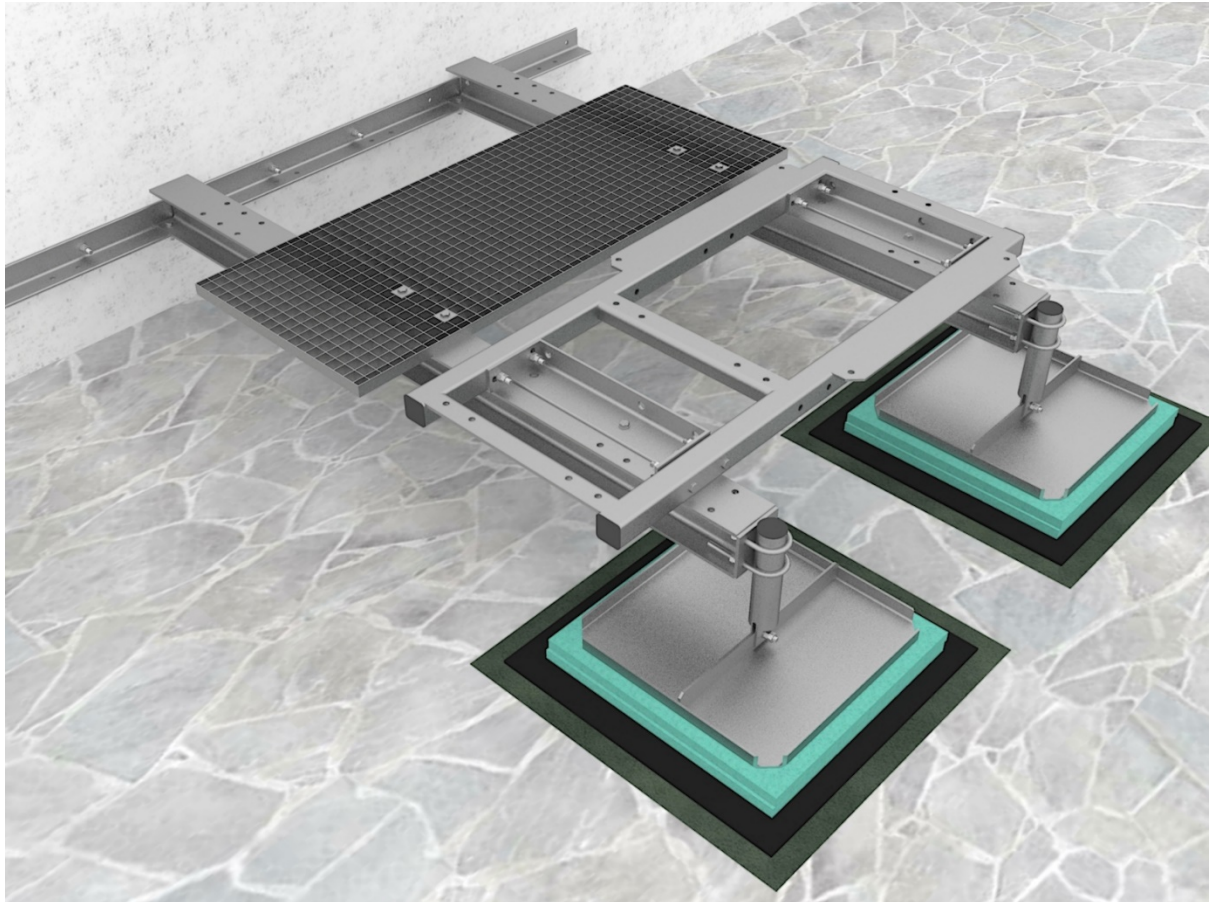


## **GR 129-05**

**RAMME PÅ TAK FESTET I OPPKANT - 2 STK BJELKER A 2M**

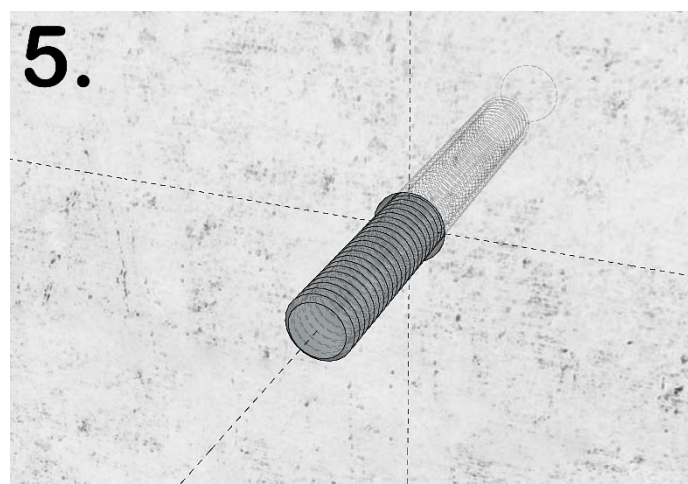
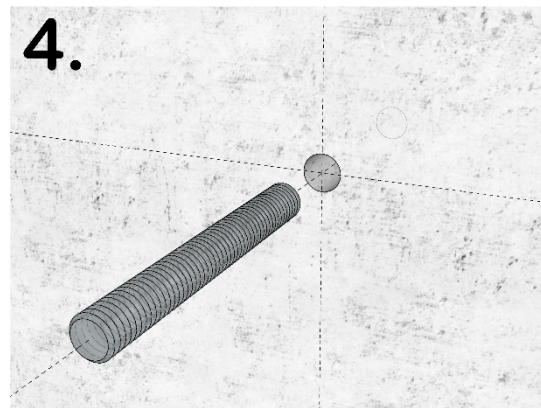
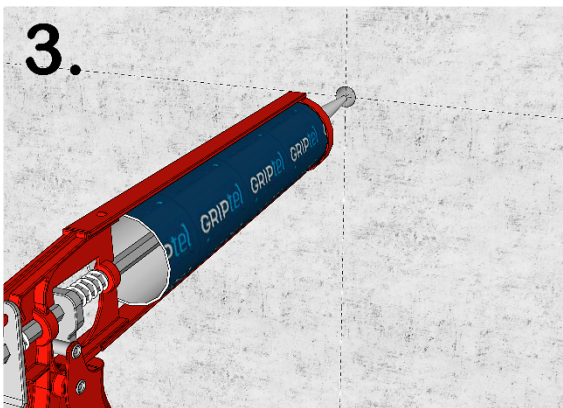
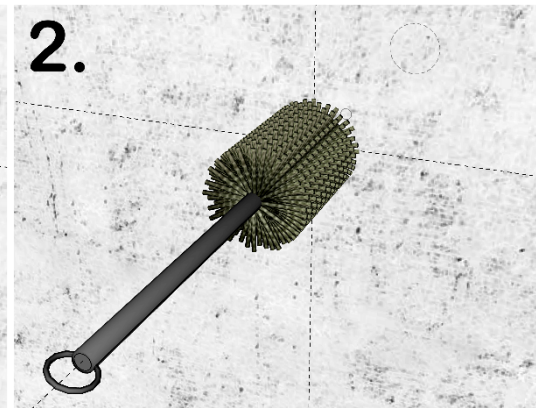
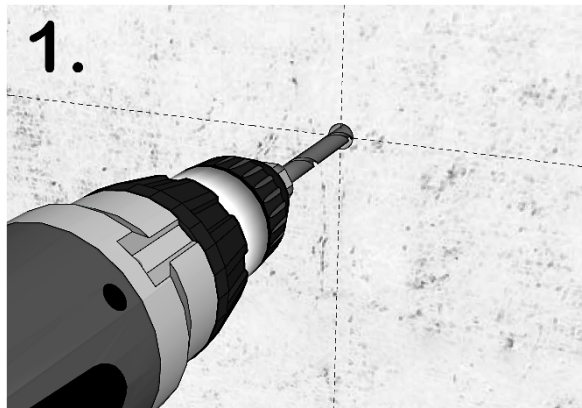
### **OVERVIEW**



### 1. PREPARING FOR THE INSTALLATION

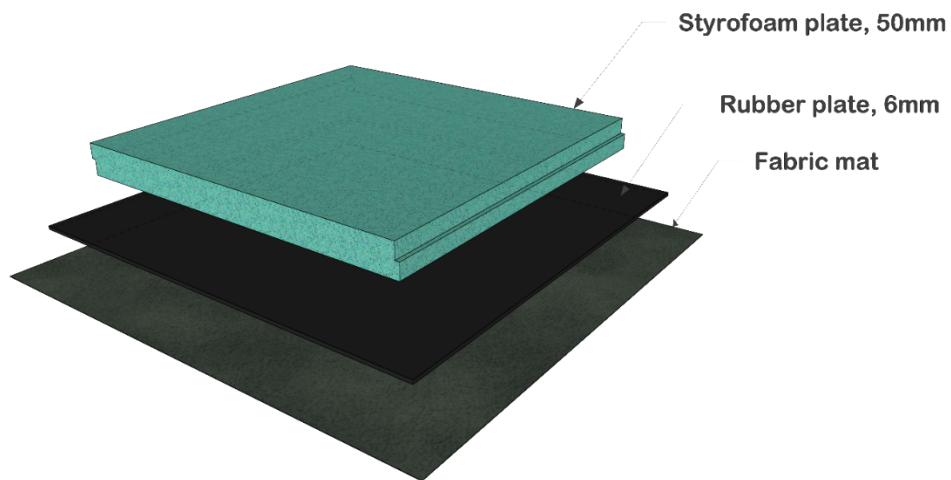


1. Drill hole to specified diameter and depth
2. Blow out the dust and clean dust and debris using brushing
3. Inject adequate MULTICOMPOUND/ Order from our web-shop: "[Pluggmasse/Pluggmasse MSC](#)"  
(if the type of the wall requires, use appropriate anchors/ Order from our web-shop: "[SIHYLSTER](#)")
4. Insert threaded rod and cut excess part of the stud



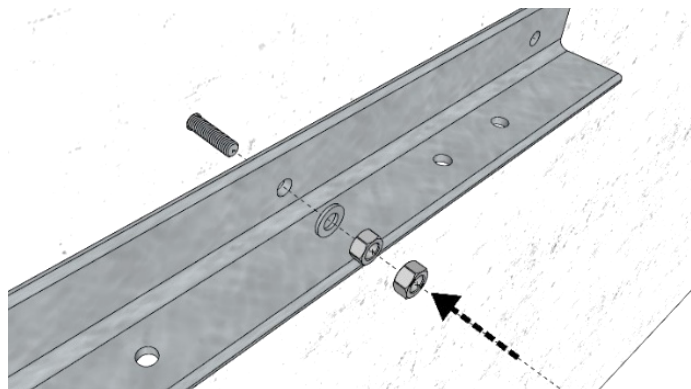
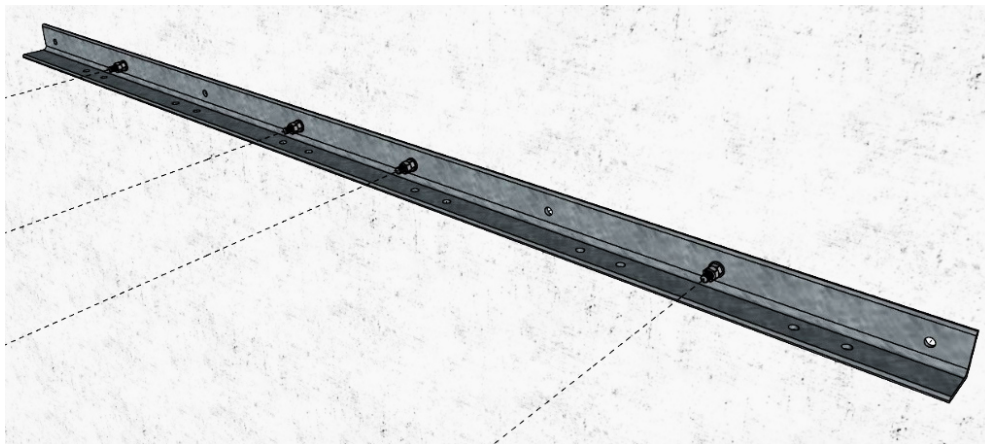
### 2. PREPARE FLORING

**i** Protect the surface from damaging using Styrofoam plate, rubber surface and fabric material below each supporting plate



### 3. SUPPORTING HORIZONTAL BEAM

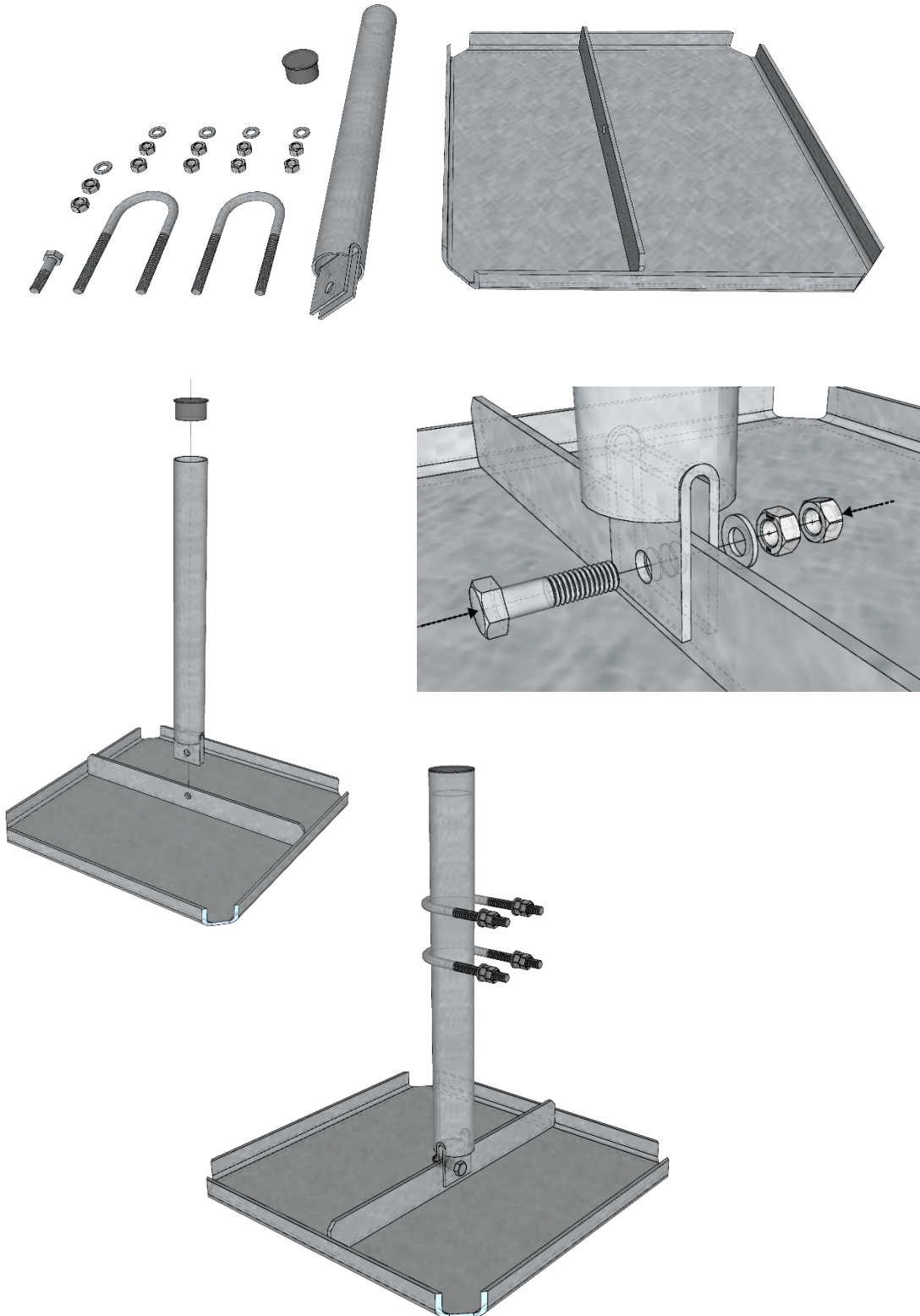
**i** Install horizontal beam **GR120-11-P22** on the prepared chemical anchors on the wall;  
(Height on the wall will depend of the surface/ Bolts and Threaded rods are not included)





### 4. Lastfordelende plate m. Ø60 rør - L=600mm; GR120-11-P19

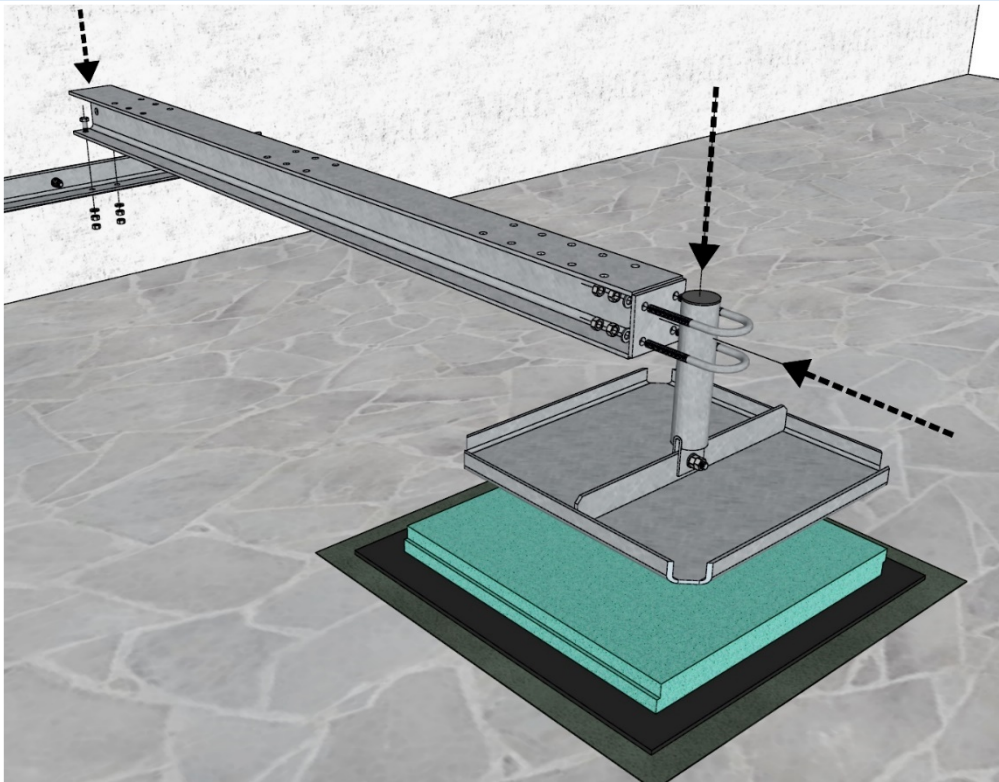
- i** Place the central tube to the vertical position on the base frame;  
Cut excess part of the tube after installation;



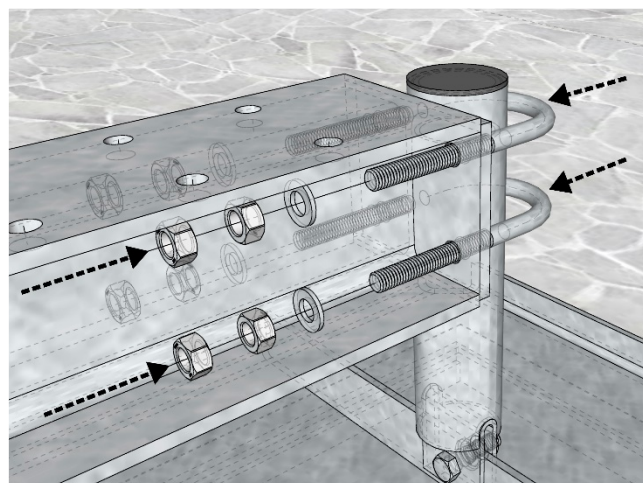
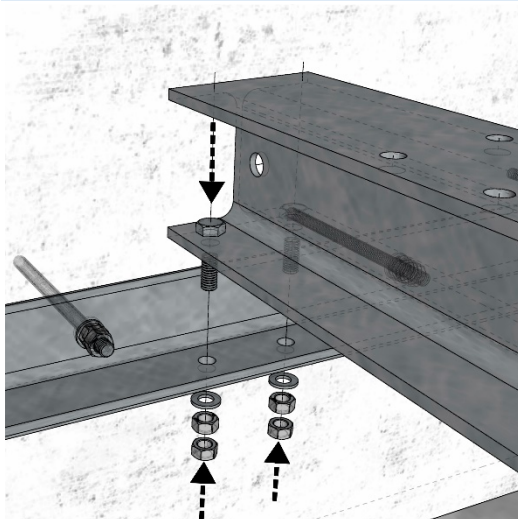


### 5. MAIN PLATFORM SUPPORT

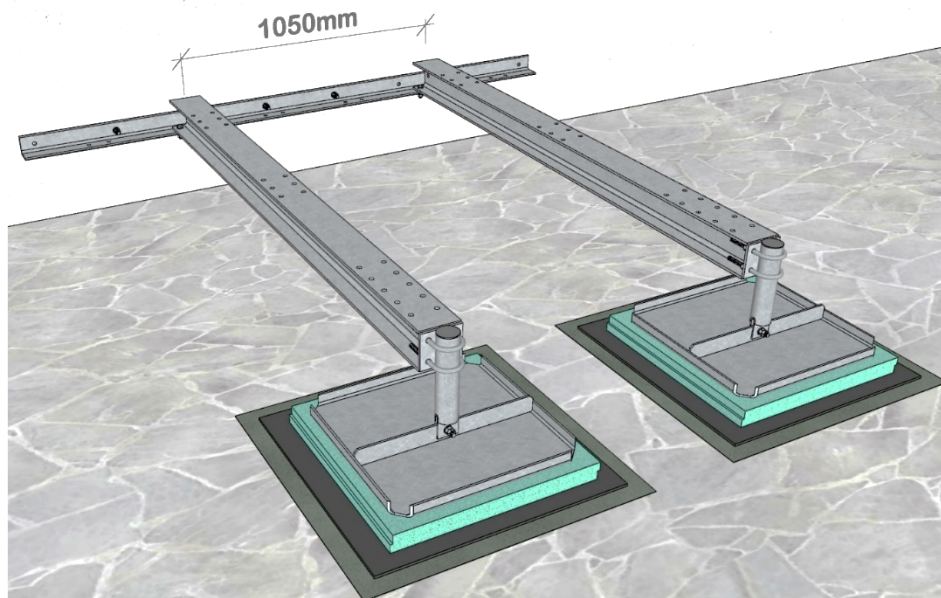
- i** Attach 2x **GR120-10-P04** beams to well-prepared horizontal L-profile on the wall and support it using 2x vertical supports **GR120-11-P19**  
Supporting pipes needs to be cut and level with top of the horizontal supporting beam



- i** Use 2x M12x40 bolts and counter nuts to attach beam to L-profile  
Make connection between vertical supports and main horizontal beams using prepared U-bolts

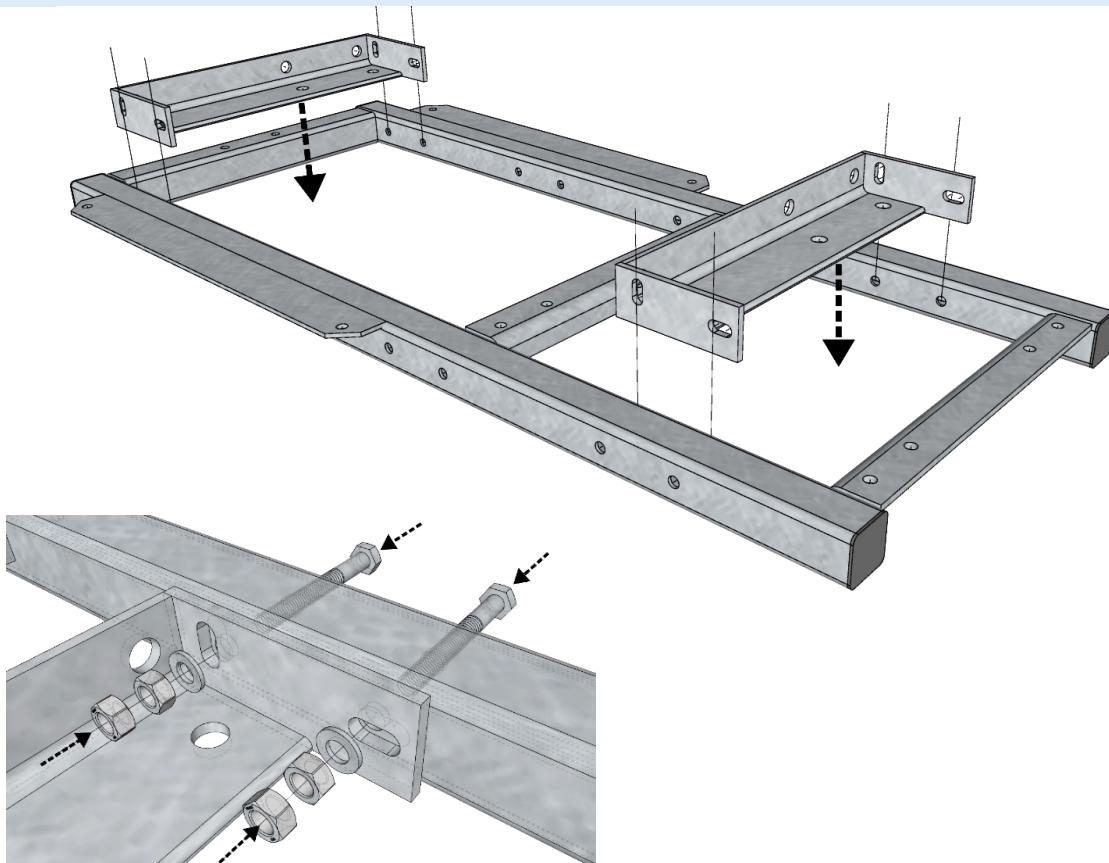


**i** Distance between two main beams should be 1050mm



### 6. EQUIPMENT FRAME

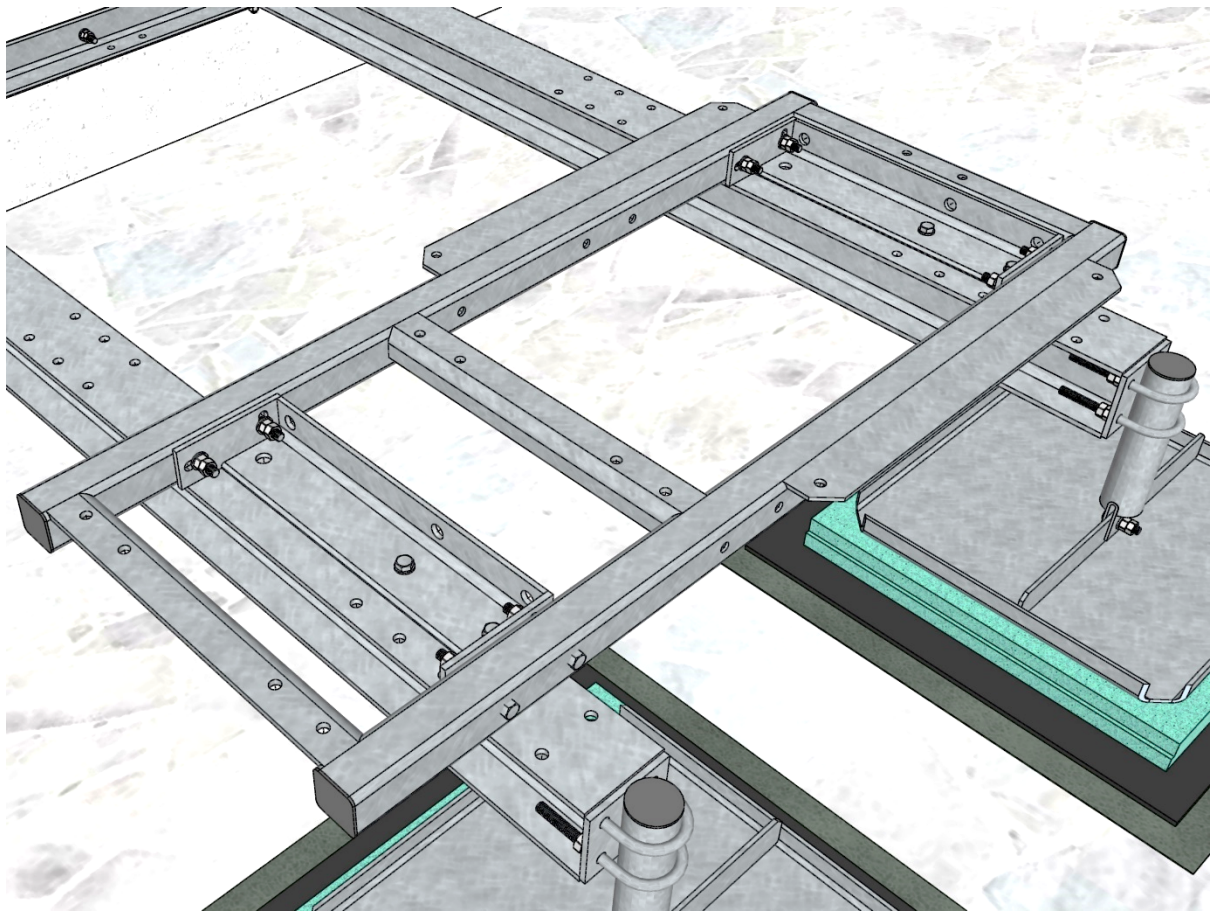
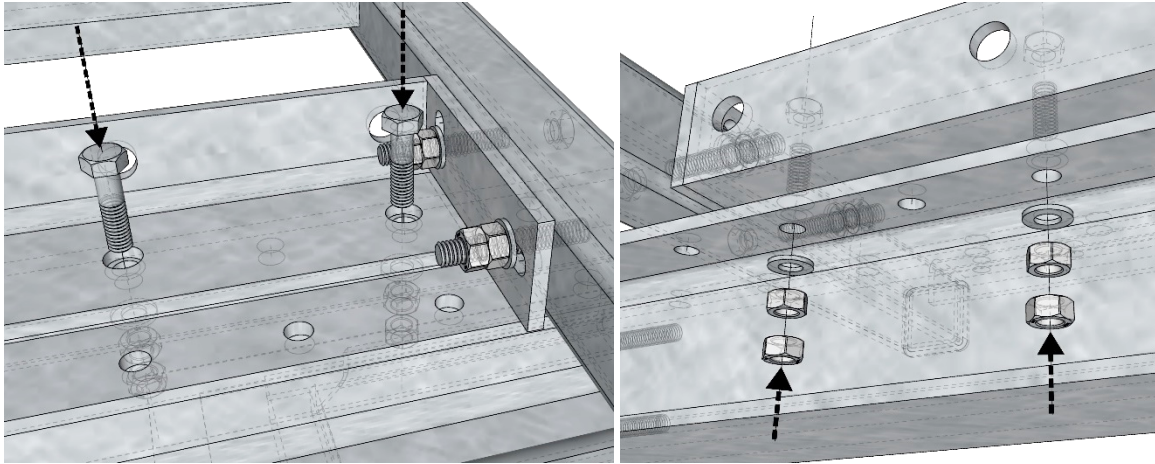
**i** Prepare frame **GR120-12-P26** by adding 2x fixing brackets **GR120-10-P09** and support them using 8x M12x100 bolts  
(Distance between fixing brackets should follow recommended distance between main horizontal beams – 1050mm)





## MOUNTING INSTRUCTION

**i** set the frame for equipment over beams using 4x M12x40 bolts

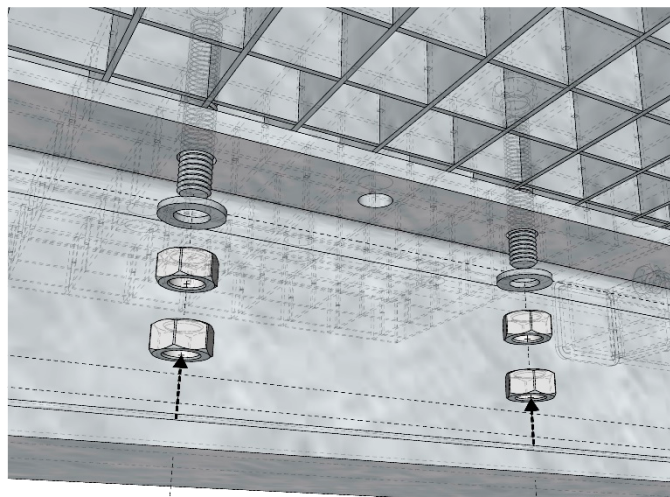
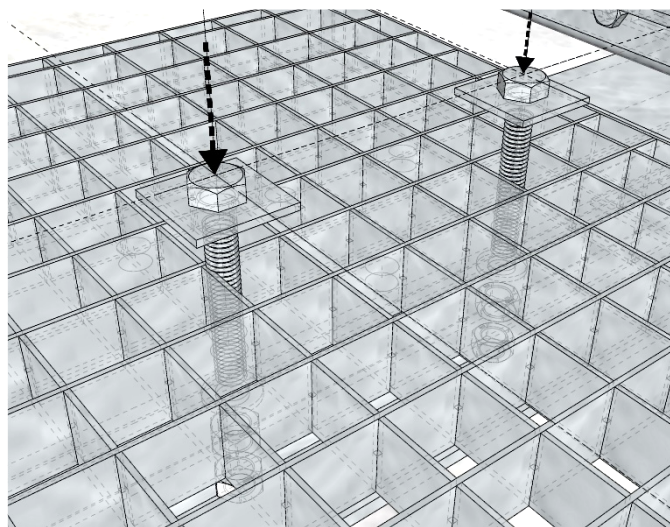
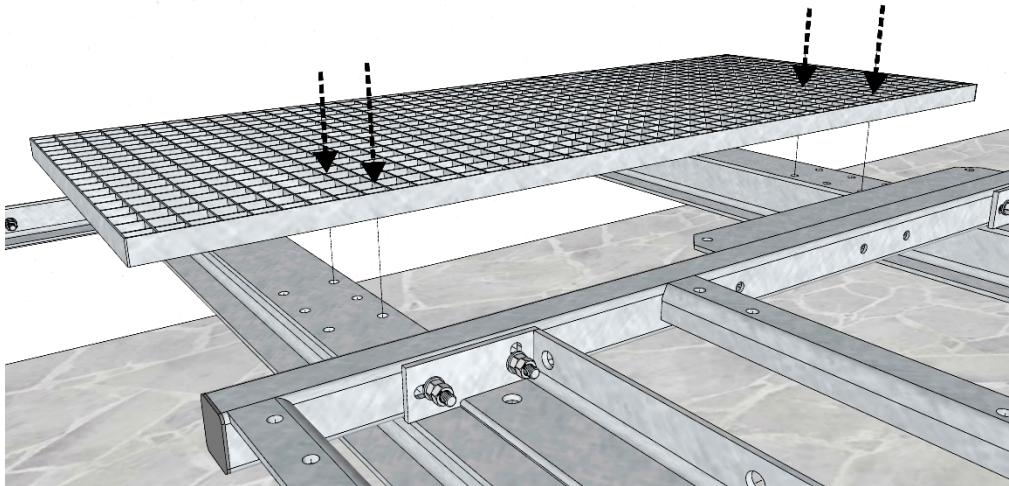




### 7. STEEL LATTICE PLATFORM

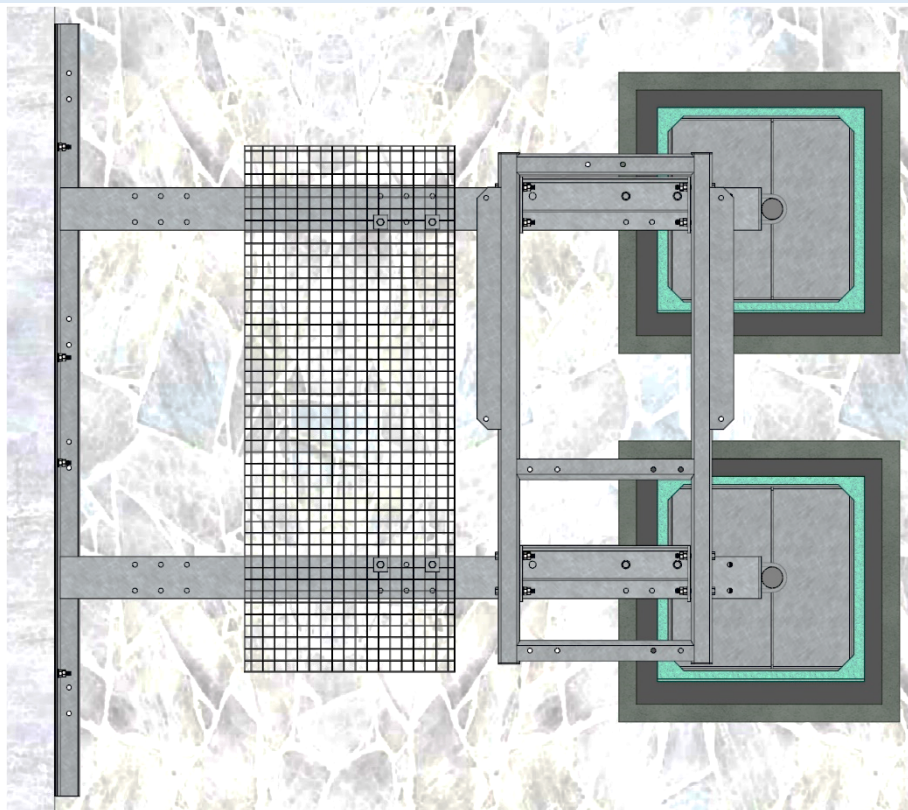
**i** Set steel lattice platform GR120-15-P56 over the horizontal beams and attach them directly to the beams using 4x M12x100 bolts and square washers (use counter bolts)

**Note:** Bolts, Nuts and Washers are not included

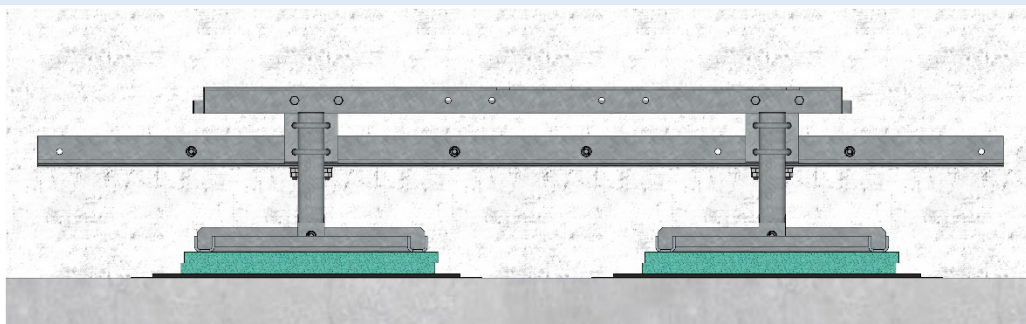


## 8. LAYOUT DRAWING

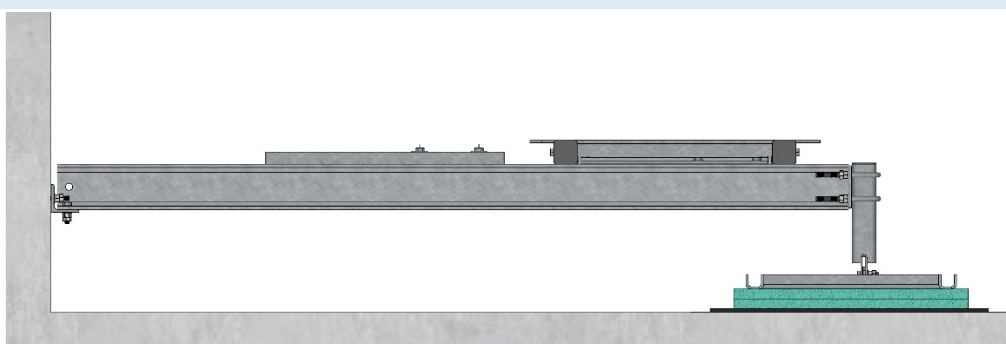
**i** Top view



**i** Front view



**i** Side view





## 9. RRU SUPPORT - OPTIONAL

**i** Install RRU-support **GR120-13-P35** on the side of the GR129-05 steel platform using 4x M12x100

Note: order separately

